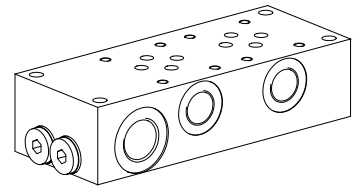


Multi-station subplate

- Threaded connection P and T G1/2"
A and B G3/8"
- $p_{max} = 350 \text{ bar}$

NG6
 ISO 4401-03

DESCRIPTION

Multi-station subplates with interfaces for 2 to 7 valves NG6 acc. to ISO 4401-03. The multi-station subplates are made from phosphated steel.

TYPE CODE

	A 6 / <input type="checkbox"/> # <input type="checkbox"/>
International standard interface ISO	
Nominal size 6	
Number of valves	
Design-Index (Subject to change)	

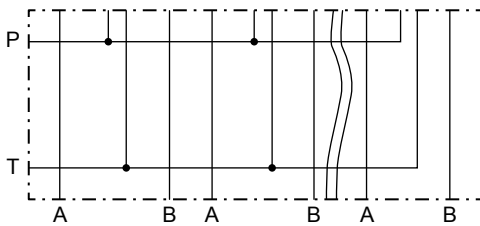
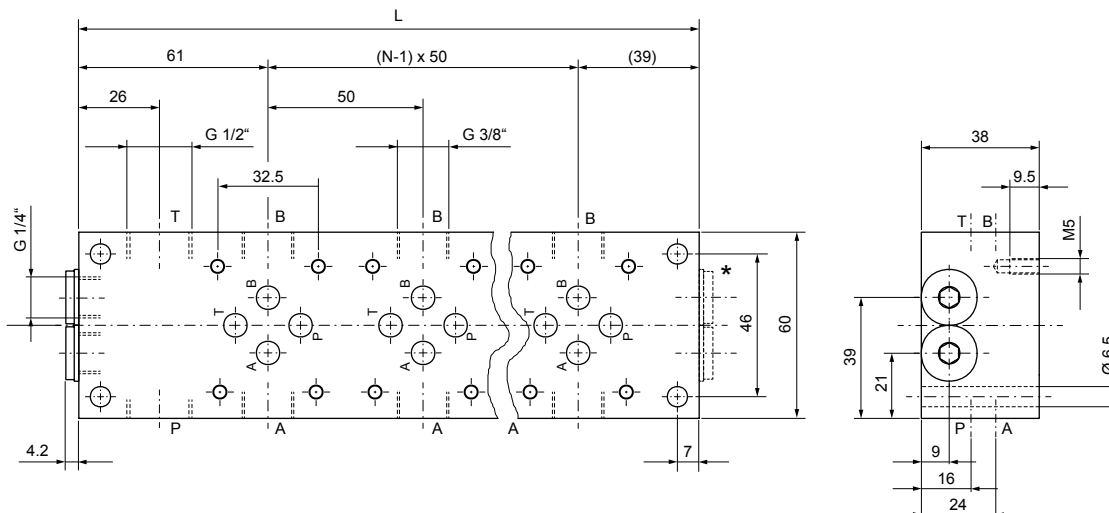
GENERAL CHARACTERISTICS

Designation	Multi-station subplate
Nominal size	NG6 acc. to ISO 4401-03
Fastening	4 location holes for cylinder screw M6
Connection	Threaded connections P and T G1/2" A and B G3/8"

HYDRAULIC SPECIFICATIONS

Working pressure	$p_{max} = 350 \text{ bar}$
------------------	-----------------------------

Mounting position	any
Weight	see chart

SYMBOL

DIMENSIONS


Type	No. of valves N	Dimension L	Weight m
A6/2	2	150	2,00 kg
A6/3	3	200	2,65 kg
A6/4	4	250	3,30 kg
A6/5	5	300	3,95 kg
A6/6	6	350	4,60 kg
A6/7	7	400	5,30 kg

* only with A6/7