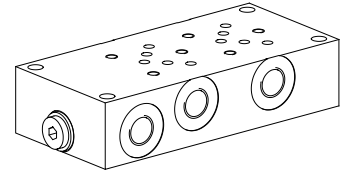


Multi-station subplate

- Threaded connection G1/4"
- $p_{max} = 350$ bar

NG4-Mini[®]

DESCRIPTION

Multi-station subplates with interfaces for 2 to 8 valves NG4-Mini acc. to Wandfluh standard. The multi-station subplates are made from phos-phated steel.

TYPE CODE

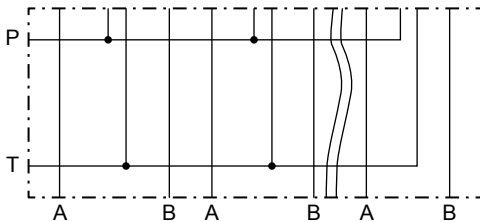
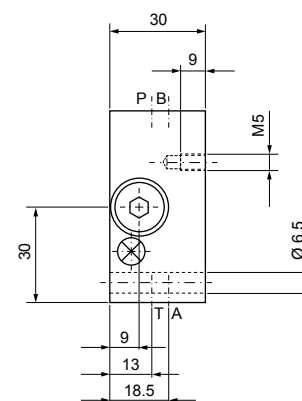
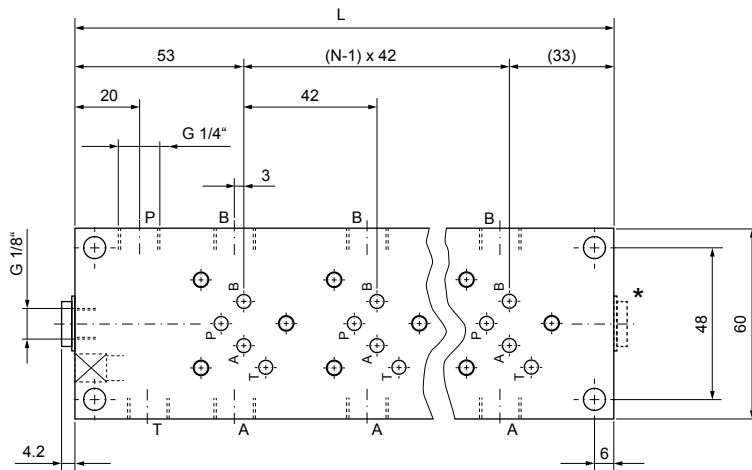
	B 4 / <input type="checkbox"/> # <input type="checkbox"/>
Mounting interface acc. to Wandfluh standard	
Nominal size 4-Mini	
Number of valves	
Design-Index (Subject to change)	

GENERAL CHARACTERISTICS

Designation	Multi-station subplate
Nominal size	NG4-Mini acc. to Wandfluh standard
Fastening	4 location holes for cylinder screw M6
Connection	Threaded connections A, B, P, T G1/4"
Mounting position	any
Weight	see chart

HYDRAULIC SPECIFICATIONS

Working pressure	$p_{max} = 350$ bar
------------------	---------------------

SYMBOL

DIMENSIONS


* only with B4/7 and B4/8

Type	No. of valves N	Dimension L	Weight m
B4/2	2	128	1,50 kg
B4/3	3	170	2,00 kg
B4/4	4	212	2,50 kg
B4/5	5	254	3,00 kg
B4/6	6	296	3,50 kg
B4/7	7	338	4,00 kg
B4/8	8	380	4,50 kg