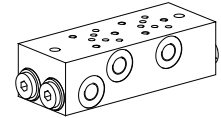


Multi-station subplate

- Threaded connection G1/8"
- $p_{max} = 350 \text{ bar}$

NG3-Mini[®]

DESCRIPTION

Multi-station subplates with interfaces for 2 to 7 valves NG3-Mini acc. to Wandfluh standard. The multistation subplates are made from phosphated steel.

TYPE CODE

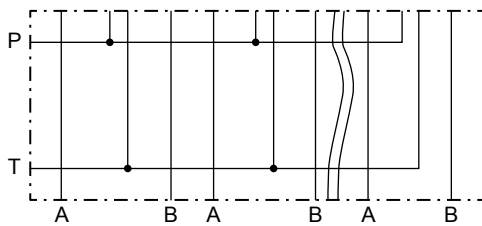
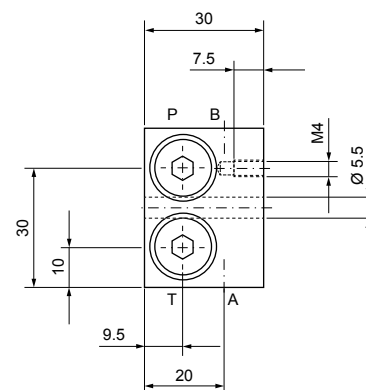
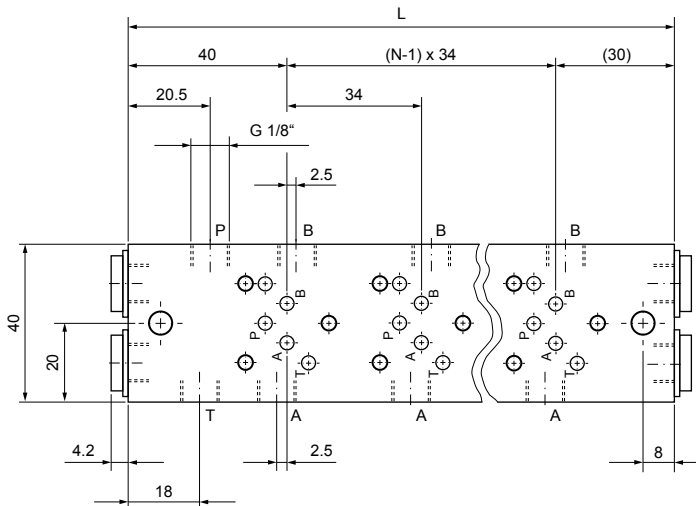
	B 3 / <input type="checkbox"/> # <input type="checkbox"/>
Mounting interface acc. to Wandfluh standard	
Nominal size 3-Mini	
Number of valves	
Design-Index (Subject to change)	

GENERAL CHARACTERISTICS

Designation	Multi-station subplate
Nominal size	NG3-Mini acc. to Wandfluh standard
Fastening	2 location holes for cylinder screw M5
Connection	Threaded connections A, B, P, T G1/8"
Mounting position	any
Weight	see chart

HYDRAULIC SPECIFICATIONS

Working pressure	$p_{max} = 350 \text{ bar}$
------------------	-----------------------------

SYMBOL

DIMENSIONS


Type	No. of valves N	Dimension L	Weight m
B3/2	2	104	0,85 kg
B3/3	3	138	1,12 kg
B3/4	4	172	1,39 kg
B3/5	5	206	1,66 kg
B3/6	6	240	1,93 kg
B3/7	7	274	2,20 kg