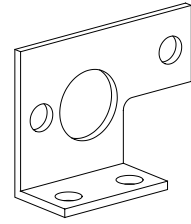
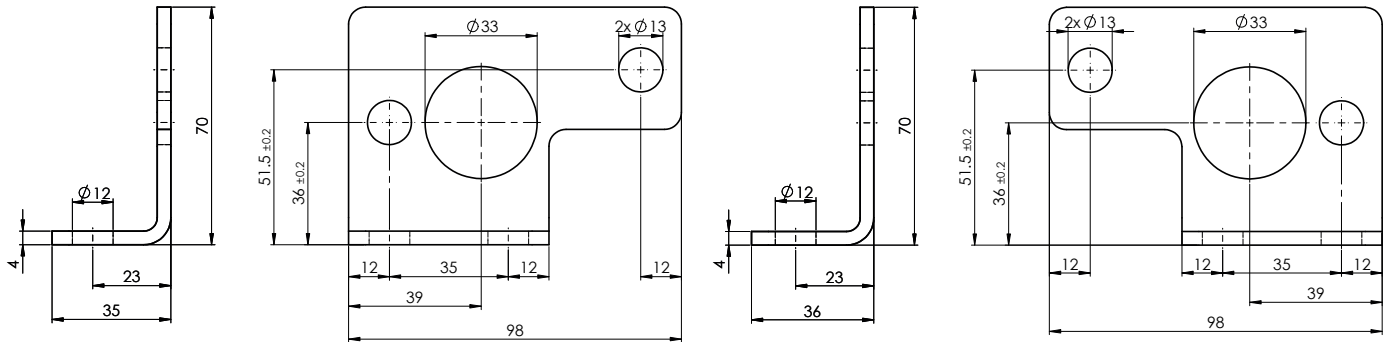


Fixation for module type many fold

- Fixing brackets
- Fixing screws

NG10

FIXING BRACKET
AB101 zinc coated
Article No. 171.1003
AB102 zinc coated
Article No. 171.1002


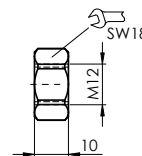
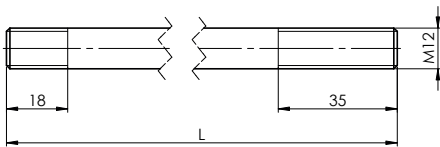
For mounting a complete assembly 2 fixing brackets are required.

1 off AB101

1 off AB102 (mounted on block side with O-ring counter bores)

FIXING SCREWS
Stud
Nut zinc coated
Article No. 153.1602
Fastening torque

80 Nm



Number	Description and dimension (M12xL)	Article No.
1 block	Stud M12x114 K8	224.6035
2 blocks	Stud M12x186 K8	224.6031
3 blocks	Stud M12x258 K8	224.6032
4 blocks	Stud M12x330 K8	224.6033
5 blocks	Stud M12x402 K8	224.6036
6 blocks	Stud M12x474 K8	224.6034
7 blocks	Stud M12x546 K8	224.6038
8 blocks	Stud M12x618 K8	224.6037

Material: Stainless steel 1.4057