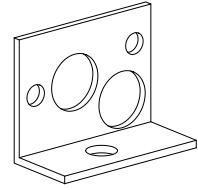
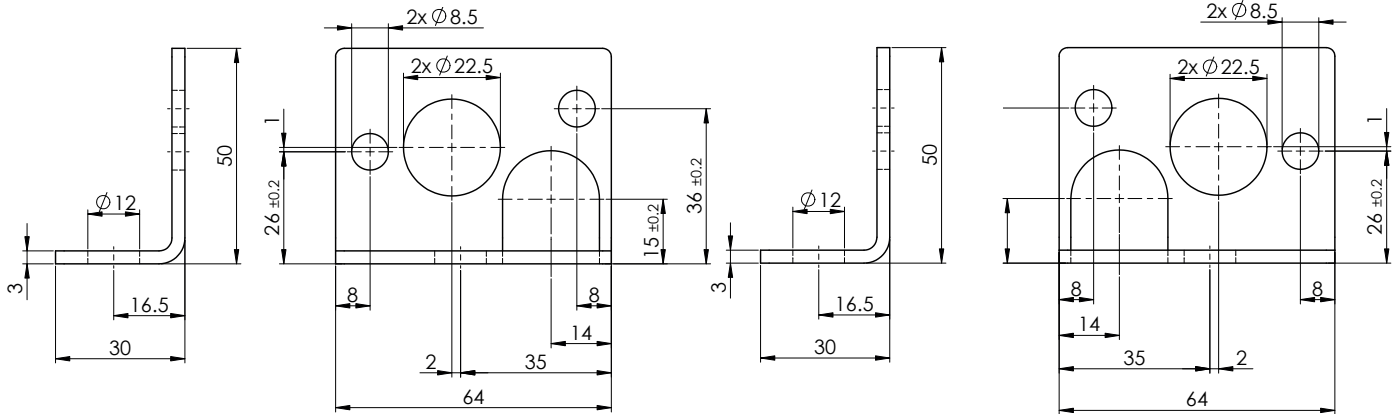


**Fixation for module type manifold**

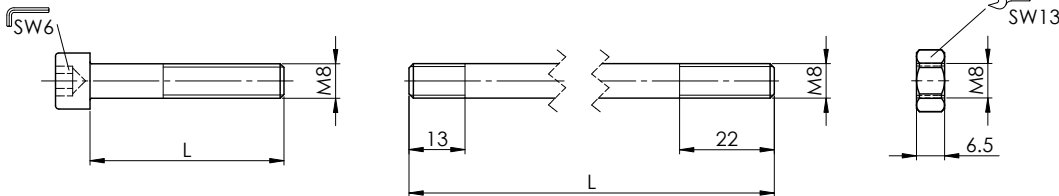
- Fixing brackets
- Fixing screws

**NG3-Mini<sup>®</sup>**  
**NG4-Mini<sup>®</sup>**

**FIXING BRACKET**
**BB41 zinc coated**
**Article No. 171.1005**
**BB42 zinc coated**
**Article No. 171.1004**


For mounting a complete assembly NG3-Mini or NG4-Mini 2 fixing brackets are required.

1 off BB41

1 off BB42 (mounted on block side with O-ring counter bores)

**FIXING SCREWS**
**Socket head cap screw**
**Stud**
**Nut zinc coated**  
**Article No. 153.1401**
**Fastening torque**  
 23,5 Nm

**FOR NG3-MINI**

Number	Description and dimension (M8xL)	Article No.
1 block	Cap screw M8x45 Steel 8.8	246.4145
2 blocks	Cap screw M8x80 Steel 8.8	246.4181
3 blocks	Stud M8x124 K8	224.4046

**FOR NG4-MINI (without BLV4Z)**

Number	Description and dimension (M8xL)	Article No.
1 block	Cap screw M8x55 Steel 8.8	246.4155
2 blocks	Stud M8x110 K8	224.4038
3 blocks	Stud M8x154 K8	224.4039
4 blocks	Stud M8x198 K8	224.4036
5 blocks	Stud M8x242 K8	224.4040
6 blocks	Stud M8x286 K8	224.4041
7 blocks	Stud M8x330 K8	224.4042
8 blocks	Stud M8x374 K8	224.4043

K8 = Material 1.4057