

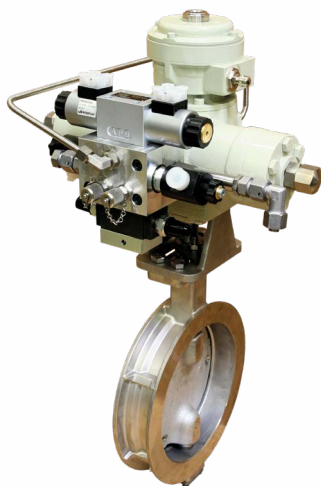
A_3206RR & AEXD3206RR SOLENOID POPPET VALVE DETENTED

SOLENOID POPPET VALVE DETENTED FLANGE CONSTRUCTION

Direct operated	NG6 detented
Q_{\max}	40 l/min
p_{\max}	350 bar

DESCRIPTION

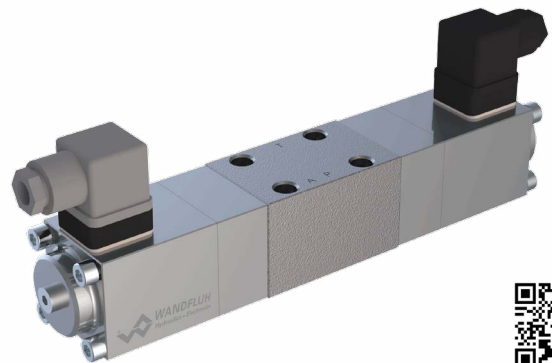
Direct operated 3/2-way solenoid poppet valve in flange construction. By means of the pressure tight switching solenoid, the poppet valve spool is opened or closed acting against the spring and is held in the corresponding switching position by the form-fitting detent. Due to the poppet spool construction with pressure compensation on both sides, the flow through the valve is possible in both directions. The metallic sealing seat closes the valve practically leakage-free.



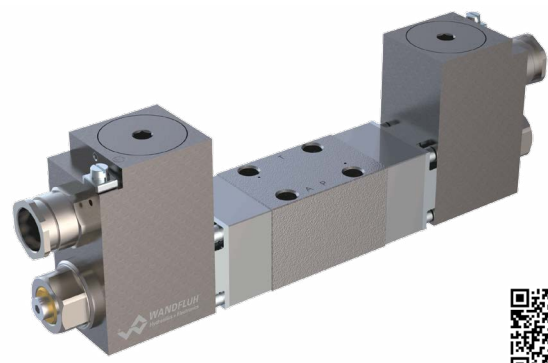
Actuator controlled by a Wandfluh valve

APPLICATIONS

Poppet valves are used where tight closing functions are essential like leakage-free load holding, clamping or gripping.



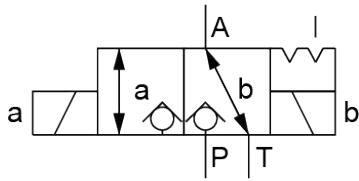
A_3206rr, leakage-free and detented



AEXD3206rr explosion protected, leakage-free, detented

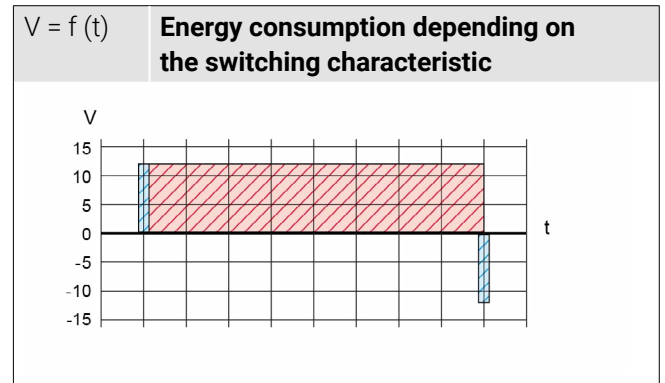


SYMBOL



Symbol A_3206rr / AExd3206rr

ADJUSTMENT CHARACTERISTIC



Conventional valve (▨); detented valve (▨)

CERTIFICATES

	Surface	Mining	Standard -25 °C bis...	Z604 -40 °C bis...
ATEX	x	x	x	x
IECEX	x	x	x	x
EAC	x	x	x	x
Australia	x	x	x	x
MA		x	x	
UL / CSA	x		x	x

Can be found on the website with the respective product

FEATURES

- Poppet valve
- Flange execution
- Direct operated
- 3/2-way
- Pressure tight switching solenoid
- Form fitting detent
- Leakage-free
- Standard or Ex-protection execution

